

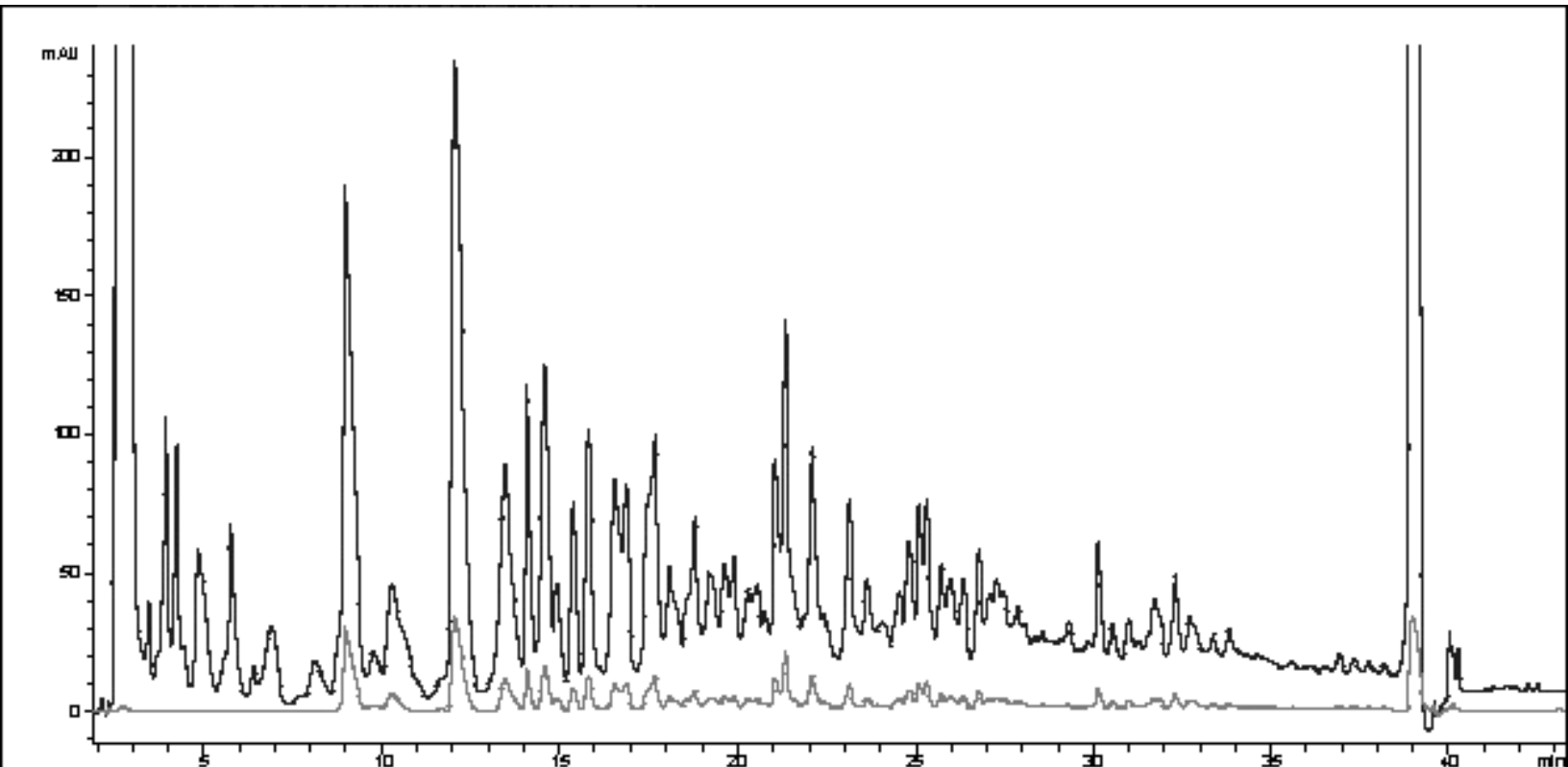
Not all base deactivated columns are the same. None compare to the BioAdvantage Basic™ column for true base deactivation. It allows LC/MS to be performed without TFA or with other acids such as formic or acetic to effect better selectivity.

The comparison below illustrates the point. Better resolution, higher sensitivity.

Try one at special pricing for evaluation. Call 800-842-4752.

**BioAdvantage Basic (top) vs. BetaBasic (bottom)
for Peptide Mapping of a Tryptic Digest**

**Tryptic digest of a small polar protein
Conditions: 3% ACN to 80% ACN, with 0.04% TFA over 45 minutes.**



THOMSON
INSTRUMENT COMPANY

354 Tyler Road • Clear Brook, VA 22624 • 540-667-7044