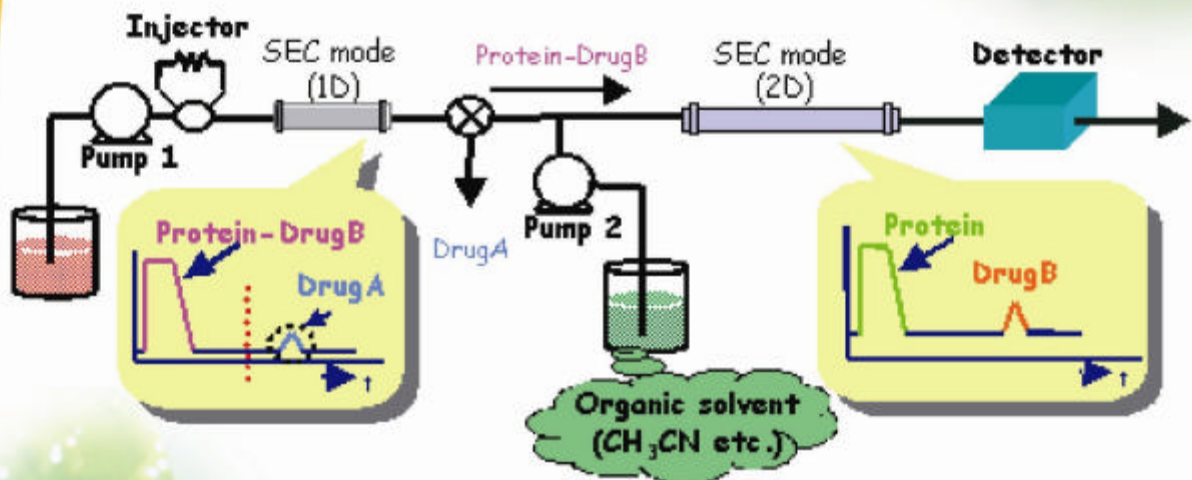
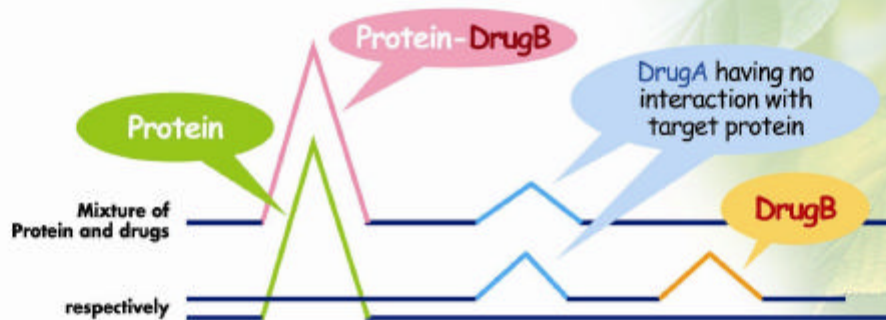
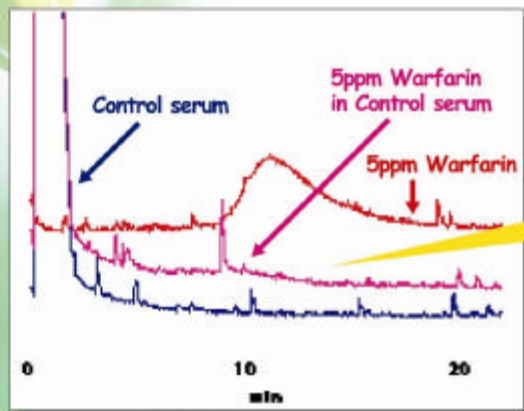


# Protein-Drug interaction



## Warfarin - human serum protein



There is no Warfarin peak, because Warfarin is bound to serum protein.

- Column : Shodex **GS320A-4A** (10x4.6mm ID)
- Eluent : 0.1M Sodium phosphate buffer(pH 7.0)
- Flow rate : 0.5mL/min
- Detector : Photo diode array(308nm)
- Column temp. : Room temp.
- Injection vol. : 100µL