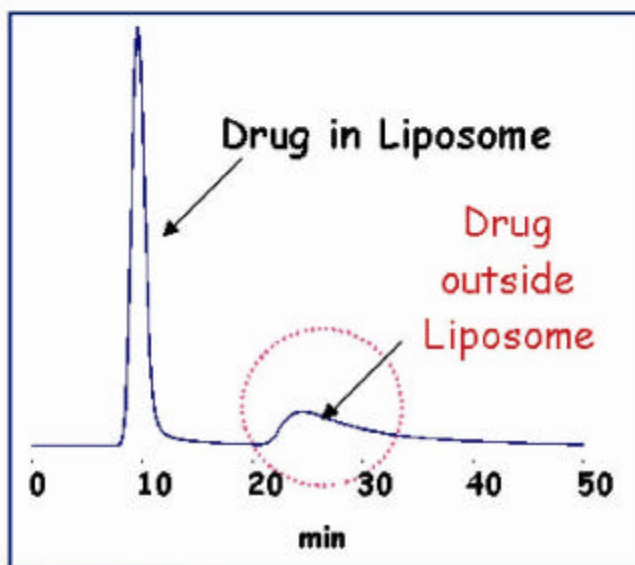


# Drug Delivery System

\*Separation of Ultra High Molecular Weight using SEC

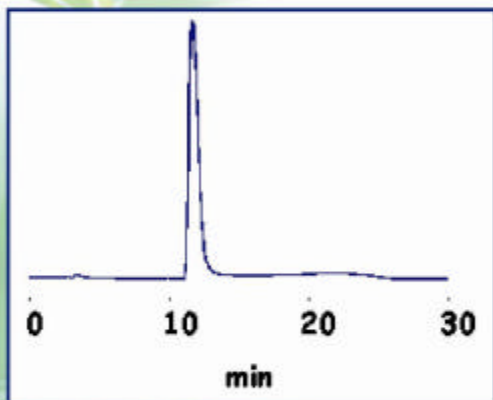
\*Determination of drugs in Liposome



Sample : Coatsome EL-01-A  
(NOF Corporation),  
Procainamide, 100  $\mu$ L  
Detector : UV(254nm)  
Column temp. : 30°C

Column : Shodex OHpak **SB-807 HQ**  
(300x8.0mmID)  
Eluent : 10mM HEPES buffer(pH7.4)  
+ 0.15M NaCl  
Flow Rate : 1.0mL/min

Concentration  
& RP analysis  
of drug



Column:  
(concentrate) MSpak **PK-4A** (10x4.6mm ID)  
(analyze) RSpak **DE-213**(150x2.0mm ID)

Eluent:  
(concentrate) 10mM HEPES buffer(pH7.4)  
+ 0.15M NaCl  
(analyze) 5mM  $\text{CH}_3\text{COONH}_4/\text{CH}_3\text{CN}=60/40$

Flow rate:  
(concentrate) 1.0mL/min  
(analyze) 0.1mL/min