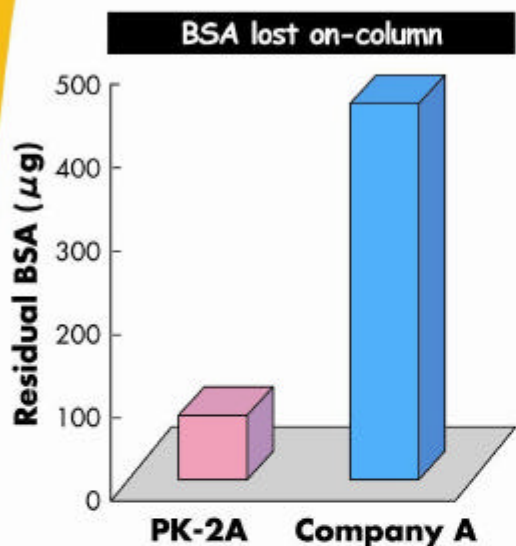


Drugs in Bio-fluid

Column Switching method

* Removal of Protein

* Recovery of hydrophilic substances



Sample : 200mg/mL BSA 100 µL inj.

(Pretreatment)

Column : Shodex **MSpak PK-2A** (10x2.0mm ID)

Eluent : 10mM Ammonium acetate (pH7.0)

Flow rate : 0.5mL/min

(Analysis)

Column : Shodex **PROTEIN KW-604S**
(50x6.0mm ID)

Eluent : 0.1% TFA aq./CH₃CN=50/50

Flow rate : 0.5mL/min

Detector : UV(280nm)

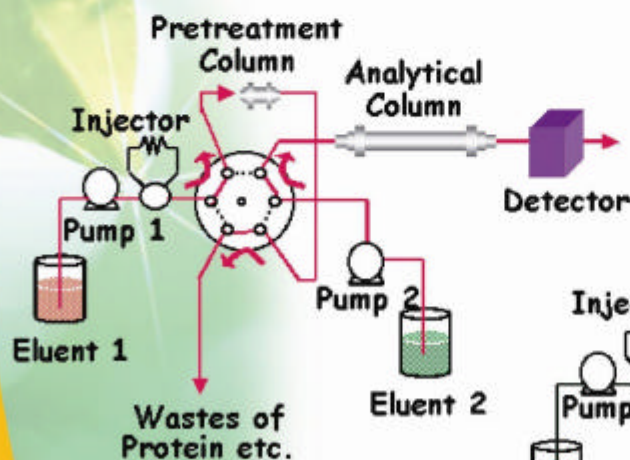
Switching time : 5min

Removal of Protein

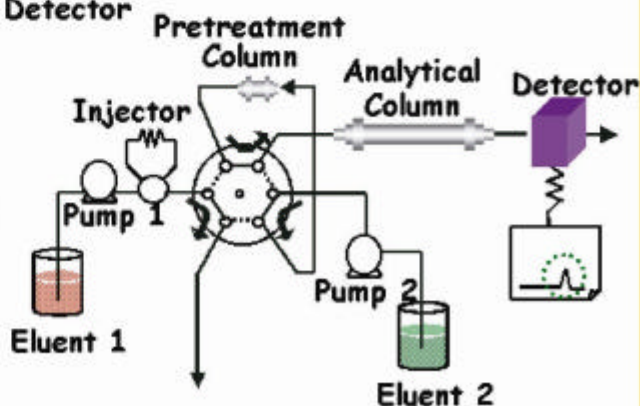
PK-2A	Company-A
99.62%	97.68%

System Diagram

1st step: Concentration & removal of protein



2nd step: Drug analysis



Shodex