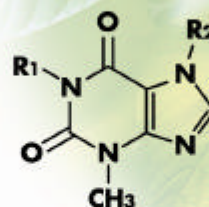
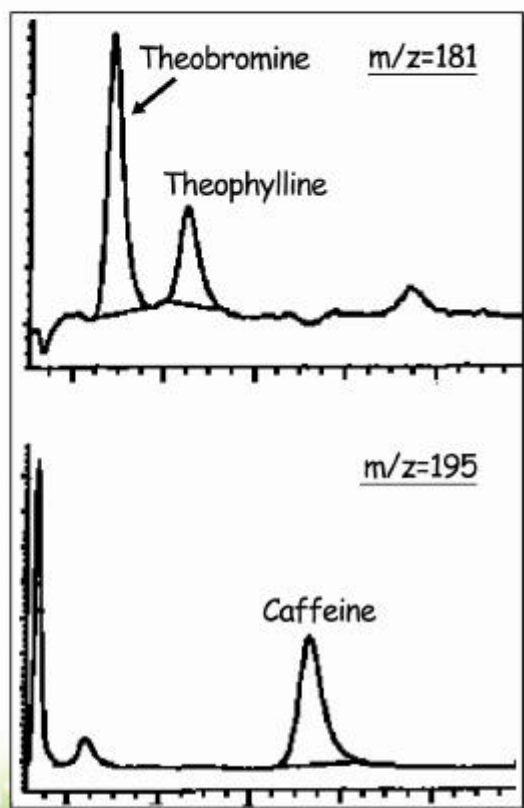


2D analysis of Methylxantines in BSA



R1=CH3, R2=CH3 ; Caffeine

R1=CH3, R2=H ; Theophylline

R1=H, R2=CH3 ; Theobromine

Sample :

Caffeine, Theophylline, Theobromine
(250ng/mL each)
in 200mg/mL BSA 5µL inj.

(HPLC)

Columns : (Pretreatment) Shodex **MSpak PK-4A** (10x4.0mmID)
(Analysis) Shodex **RSpak DE-213** (150x2.0mmID)

Eluent : (Pretreatment) 10mM Ammonium acetate(pH4.5)
(Analysis) 10mM Ammonium acetate(pH4.5)/CH3CN=90/10

Flow rate : (Pretreatment) 1.0mL/min
(Analysis) 0.2mL/min

Column temp. : 40°C

Switching time : 5min

(MS)

Instrument : Agilent1100MSD

Ionization : ESI (Positive)

Capillary voltage : 3500V

Fragmentor : 80V

Nebulizer : N2(45psi)

Drying gas : N2(10L/min, 350°C)

Molecular range : m/z=181 or 195